

# OAKVILLE STONE

Patios | Porches | Pools | Walkways



Why Choose Oakville Stone





## Why choose Oakville Stone:

- ✓ Highest quality stone the earth has to offer
- ✓ Proven durability in all climates
- ✓ Largest inventory of imported exterior landscape stone in North America
- ✓ Precision cut with state of the art technology
- ✓ Calibrated to maintain minimal thickness variation
- ✓ Wide range of colors and textures to choose from
- ✓ Products for all applications
- ✓ Ethically and sustainably produced
- ✓ 100% Natural Stone



Table of Contents



# Table Of Contents

Page 6-7	About Oakville Stone
Page 8-9	Ethics and Sustainability
Page 10-11	Oakville Algonquin Brown
Page 12-13	Oakville Antique Limestone
Page 14-15	Oakville Autumn Brown
Page 16-17	Oakville Black Limestone
Page 18-19	Oakville Blue Ice
Page 20-21	Oakville Brown Wave
Page 22-23	Oakville Buff
Page 24-25	Oakville Hampton Limestone
Page 26-27	Oakville Imperial Black
Page 28-29	Oakville Jet Black
Page 30-31	Oakville Kodiak
Page 32-33	Oakville Lavender
Page 34-35	Oakville Rainbow
Page 36-37	Oakville Rustic Plains
Page 38-39	Oakville Slate Grey
Page 40-41	Oakville Teakwood
Page 42-43	Paving
Page 44-45	Treads
Page 46-47	Pool Coping
Page 48-49	Steps
Page 50-51	Fillers & Curbs
Page 52-53	Pier Caps
Page 54-55	Slabs
Page 56-57	Custom Fabrication
Page 58-59	Installation Methods
Page 60	Considerations when using natural stone
Page 61	<b>Win</b> a trip to the Caribbean!
Page 62-63	Products At A Glance





## About Oakville Stone

Oakville Natural Stone Corporation prides itself on providing the highest quality natural stone products the earth has to offer. It is our continuous goal to provide a level of service that is unmatched in the natural stone industry. Our commitment to quality, service, and sustainability has helped us grow into one of North America's most highly regarded producers and suppliers of imported natural stone.

Our global supply chain is built on exclusive overseas partnerships, a large staff of our own company inspectors, and a solid transportation framework which enables us to not only supply all the products you may see in this catalog, but any imported natural stone product you may find in the market.

With a vast and growing dealer base as well as multiple distribution centers, Oakville Natural Stone products are available for immediate delivery for any size project throughout North America.







# Ethics & Sustainability

Before the term “Green” was widely used we had already incorporated our green leaf into our logo to symbolize a large part of our corporate values. From the beginning we made it our mission to embrace the path of environmental sustainability. At Oakville Natural Stone, before choosing any product to incorporate into our portfolio, we have strict guidelines in place to ensure that the stone is both environmentally sustainable and ethically produced.

## Sustainability

During the sourcing stages of our products, careful consideration is given to the use of fossil fuel and energy consumption (from the quarry level to the production level), the impact to the environment in regards to ground and surface water, emissions to air, waste recovery and disposal, noise pollution, and the visual impact to the surrounding area. Also, whenever possible, we personally visit each and every quarry to ensure the stone is sustainably sourced and the impact to the environment is limited and repairable. As a leader in the natural stone industry we consider it our duty to ensure that sustainable practices and guidelines are met at every step of the way.

## Ethics

At Oakville Natural Stone, Ethical trade is at the core of our business relationships. This means everyone we do business with must take responsibility for providing acceptable working conditions based on what we consider basic human rights.

Main criteria of our ethical code:

- No forced or bonded labor
- No use or recruitment of "child labor"
- Workers are free to leave their employment at their discretion
- Workers are able to form and join trade unions and bargain collectively
- Working conditions must be safe and hygienic
- Regular and documented health and safety training and procedures are compulsory
- Wages, if at a minimum, will provide for basic needs and some discretionary income
- Working hours are not excessive
- No discrimination
- Regular employment is provided
- No harsh or inhumane treatment

When choosing stone for your next project, ask yourself and your supplier whether the stone of your choice is sustainable, and ethically sourced and produced. Remember, not all producers and suppliers are created equal. If you are able to obtain a very low price for your imported natural stone, then it is highly likely that the importer and/or producer does not follow a strict framework of sustainable and ethical practices.

For more information about the Ethical Trading Initiative, and to see the base code, visit: [www.ethicaltrade.org](http://www.ethicaltrade.org)

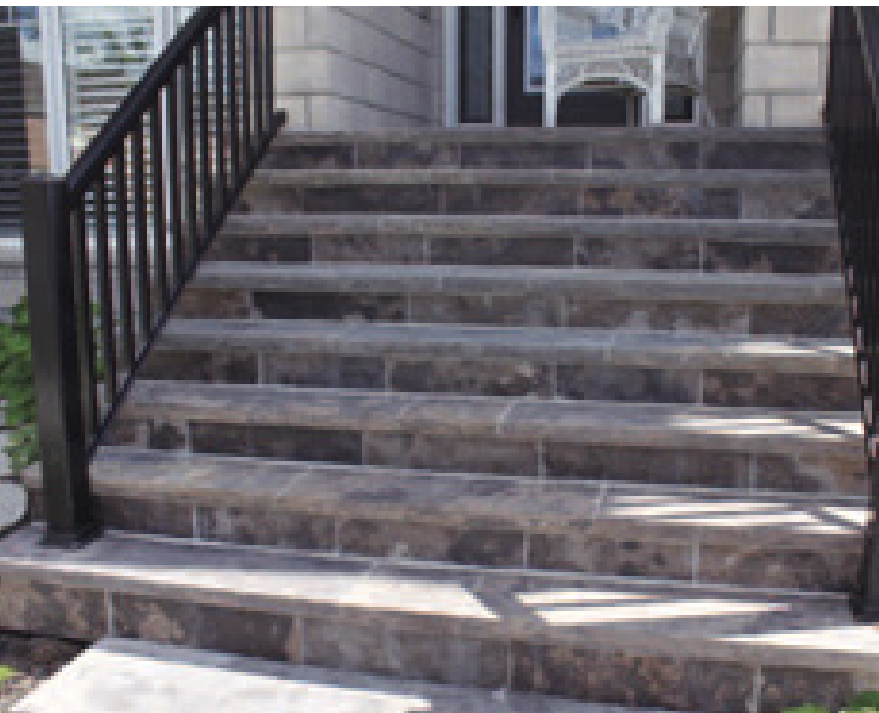
Oakville Algonquin Brown





## Oakville Algonquin Brown

Oakville Algonquin Brown is a dolomitic limestone with shades of brown, beige, and buff reminiscent of native Canadian limestone. Its familiar earth tones and natural movement allow you to feel as though we have extracted the ground beneath you. Its sawn non-slip texture is ideal for areas where grip is essential. Oakville Algonquin Brown is a perfect choice for those seeking their own piece of a North American nature reserve.



Oakville Antique Limestone





## Oakville Antique Limestone

Oakville Antique Limestone is the most recent addition to our collection. Its increasing popularity is due to its unique traction control finish and luxurious deep color. With swirls of charcoal grey on ebony black, with bone and eggshell white, this stone embodies a timeless essence suitable for any architectural masterpiece.



A photograph of an outdoor pool area featuring a stone patio and a swimming pool. The patio is made of large, rectangular, light-colored stone tiles with a mix of beige, tan, and brown tones. The pool is rectangular and filled with clear blue water. In the background, there are tall, thin trees and a dark sky. A stone wall is visible on the left side of the pool.

Oakville Autumn Brown



## Oakville Autumn Brown

Oakville Autumn Brown is a quartzitic sandstone dependable for any climate. The blend of light to dark brown gives Oakville Autumn Brown an earthy feel as if the natural landscape has transformed into the beauty of your personal oasis. The robust coloring inherent in Oakville Autumn Brown gives your project the capability to look vintage like an exquisite wine cellar, or modern like a luxury resort.



## Oakville Black Limestone

From chalkboard black to charcoal grey, Oakville Black Limestone complements almost all other natural or man-made landscape material. Its consistent texture is pleasing to the eye and lends itself well to those wanting a sleek and contemporary look.





Oakville Black Limestone





Oakville Blue Ice

## Oakville Blue Ice

Oakville Blue Ice is a quartzitic sandstone known for its tenacious durability. Its blue and grey tones resemble those of a nautical Oceanside or a patriotic pennant. Oakville Blue Ice is familiar to a domestic color scheme and brings a historical class to your everlasting project.



Oakville Blue Ice





## Oakville Brown Wave

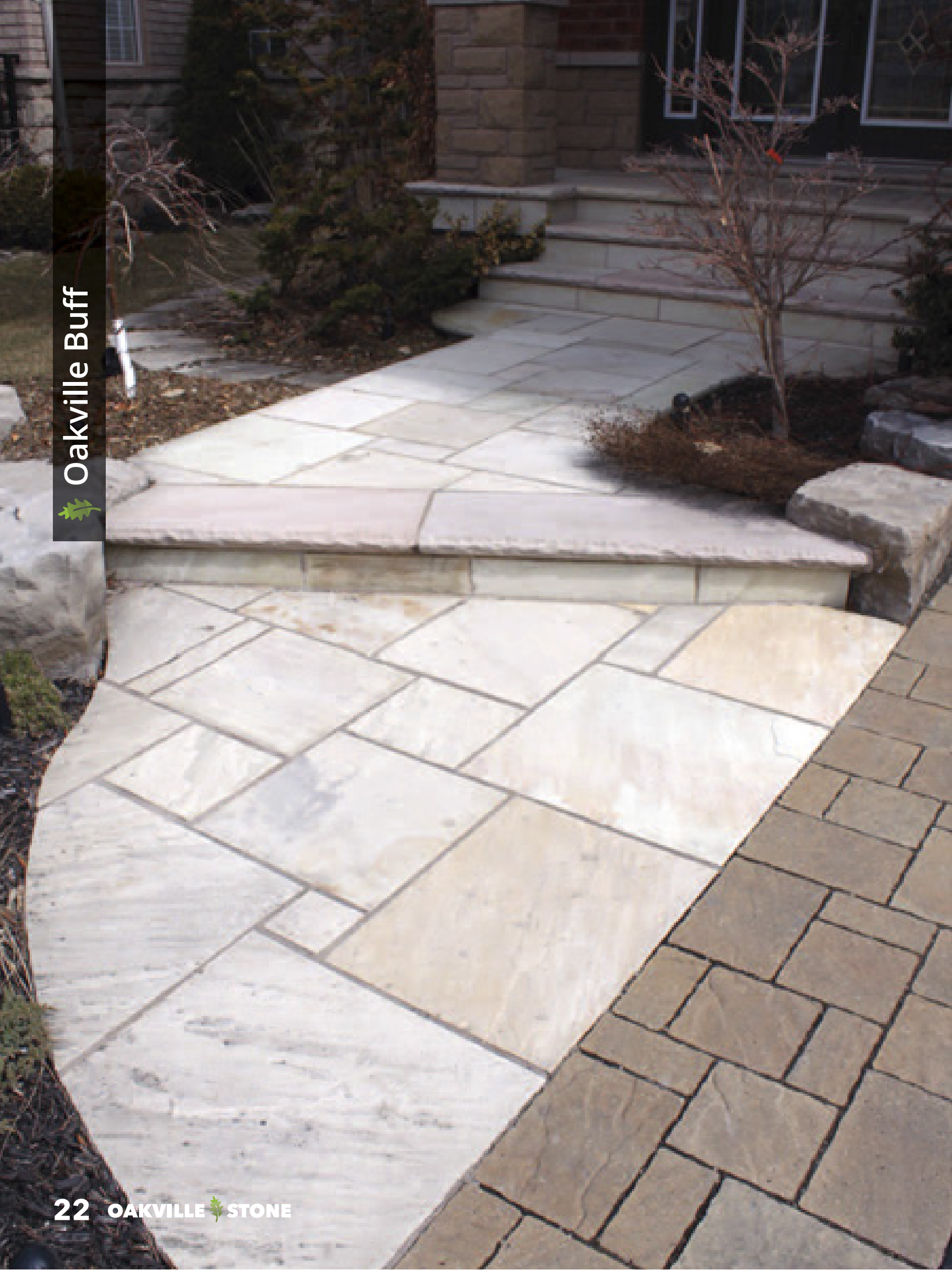
Oakville Brown Wave is a sedimentary sandstone with bold striations and color variation. Its range of brown to deep purple is ideal for a colonial estate or a welcoming commercial project. Oakville Brown Wave's uniform texture is highly sought after and very dependable. This product is very versatile and ideal for any application. When it comes to hearths and mantles Oakville Brown Wave is usually a top choice product.



Oakville Brown Wave



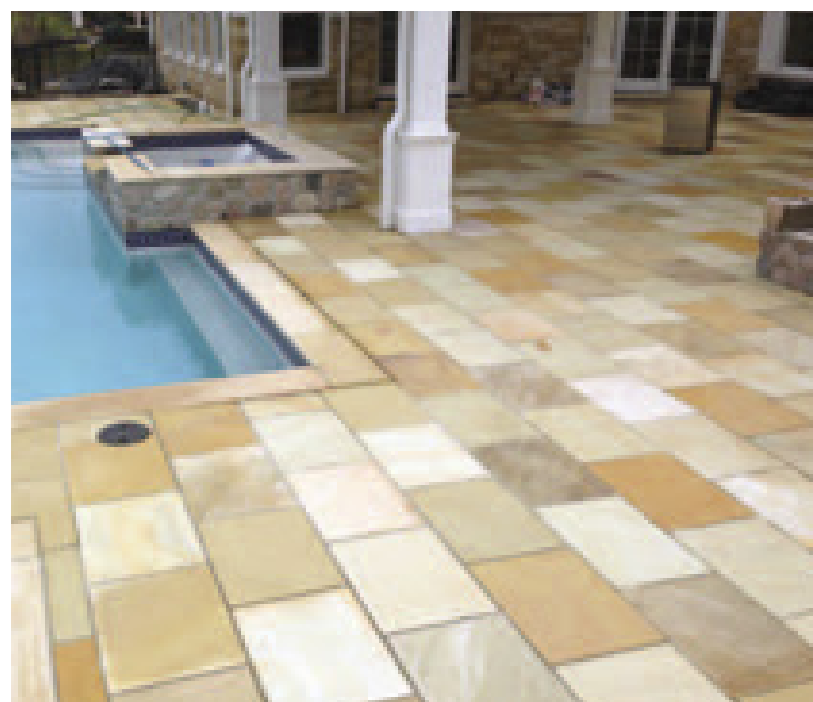
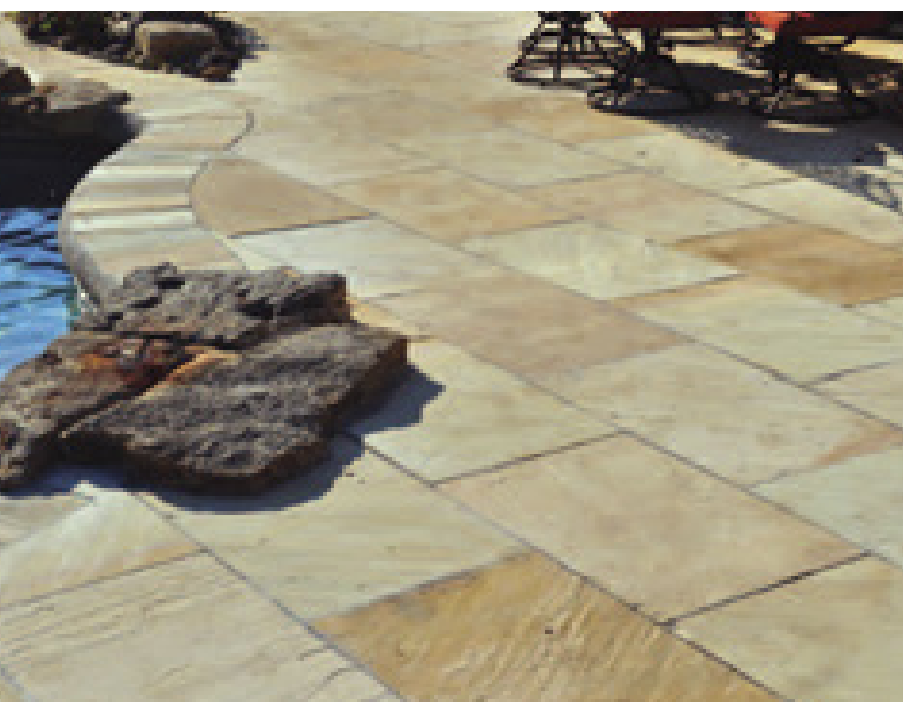
Oakville Buff





## Oakville Buff

Oakville Buff sandstone is widely known for being a stone whose heat absorption and retention is very low, thus allowing you to walk barefoot on the product without burning your feet. For this reason it is very popular for pool decks, but can also be used for any porch, patio, or walkway as well. Oakville Buff's color scheme is mainly made up of buff, beige, cream, and tan but also has colors like white, brown, orange, yellow, subtle sage, and even some black making it unique and naturally alluring. It is not easy to find a product that is cool on the feet with a non-slip texture, but Oakville Buff's natural cleft surface gives you the best of both worlds.



## Oakville Hampton Limestone

With our exclusive finish Oakville Hampton Limestone is smooth but textured. Like a monastery floor softened by the footsteps of a thousand years, this product is both durable and everlasting. The consistent blend of dark blue, medium grey, and glimpses of white have enabled Oakville Hampton Limestone to become one of our most dependable and sought after products.





Oakville Hampton Limestone



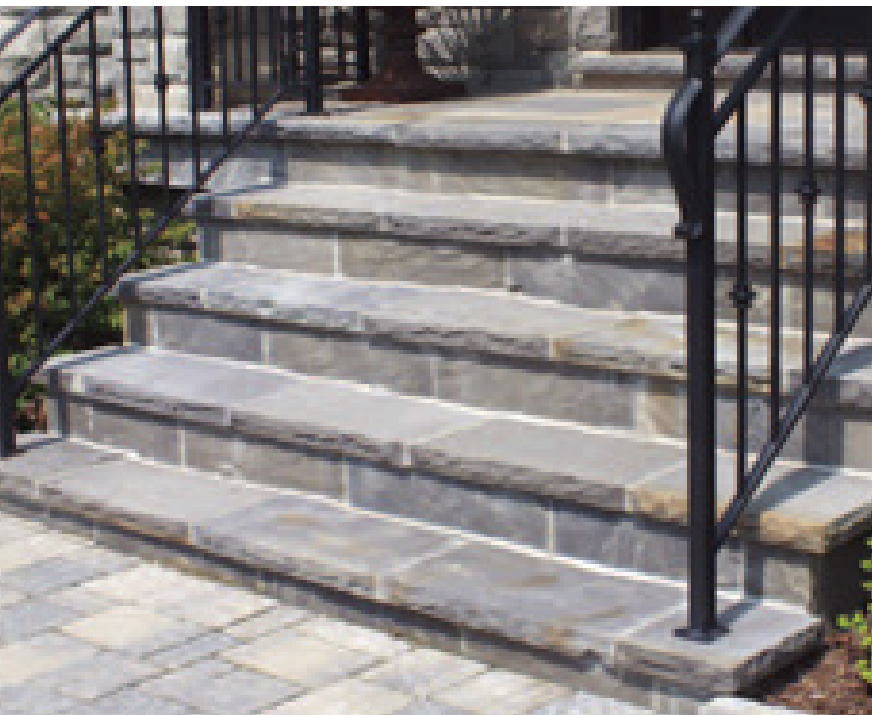
Oakville Imperial Black





## Oakville Imperial Black

Oakville Imperial Black possesses the mystical feel of an ancient grotto. Its rugged texture feels as though the earth has formed beneath your feet. Its color variation transitions from cloud like whites, to charcoal greys, to deep blacks with hints of copper. Oakville Imperial Black's reclaimed look is both timeless and is reminiscent of a noble tradition.





Oakville Jet Black

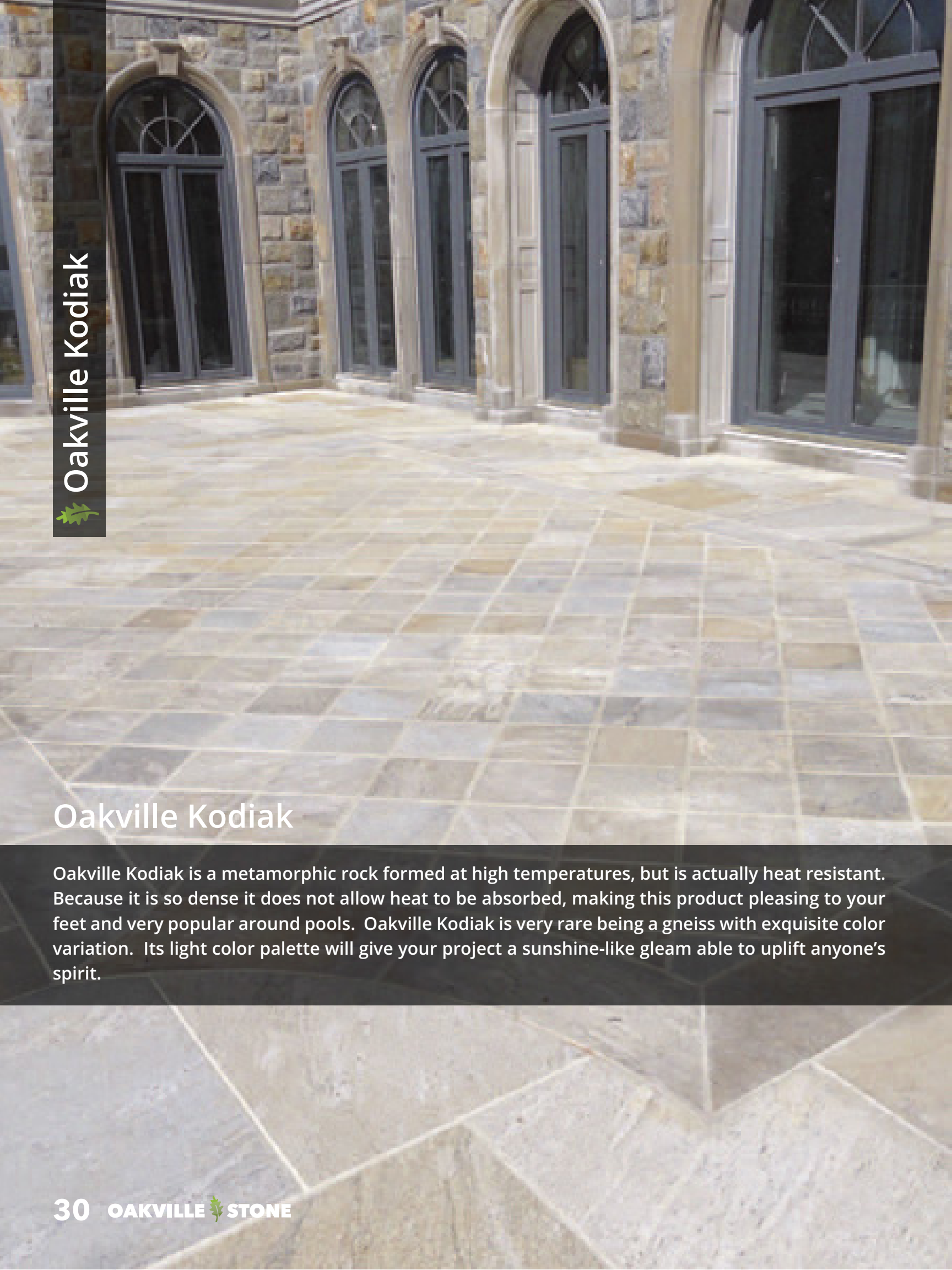
## Oakville Jet Black

Formed in the depths of the earth's crust over one billion years ago, Oakville Jet Black granite has, and will, stand the test of time. Being the hardest and most durable stone we have to offer, it has the fortitude to take on any climate in any application. Prized for its ultra consistent deep black color, Oakville Jet Black is as comfortable on a suburban development as it is on any contemporary skyscraper.



Oakville Jet Black



A photograph of a courtyard paved with large, rectangular stone tiles in shades of tan, beige, and light grey. The tiles are laid in a grid pattern. In the background, there is a stone wall with several arched windows and doorways. The windows have dark frames and some have decorative glass. The overall scene is bright and well-lit.

## Oakville Kodiak

## Oakville Kodiak

Oakville Kodiak is a metamorphic rock formed at high temperatures, but is actually heat resistant. Because it is so dense it does not allow heat to be absorbed, making this product pleasing to your feet and very popular around pools. Oakville Kodiak is very rare being a gneiss with exquisite color variation. Its light color palette will give your project a sunshine-like gleam able to uplift anyone's spirit.



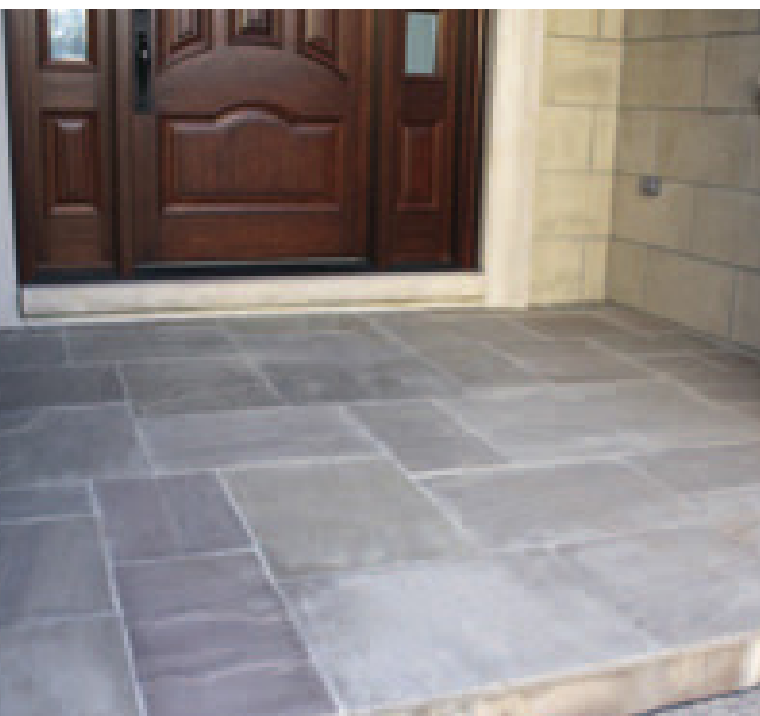






## Oakville Lavender

Unlike the name suggests there is no purple in Oakville Lavender sandstone. Instead, colors range between buff, tan, brown, sage, and ochre. The overall color is similar to those found in weathered Pennsylvania fieldstone. Oakville Lavender blends well with any natural landscape and compliments many domestic natural stone veneers.



A large, rectangular patio made of Oakville Rainbow sandstone tiles. The tiles are arranged in a grid pattern and feature a natural, multi-colored pattern of browns, tans, and greys. The patio is set in a landscaped area with green plants, a black metal fence, and a blue pool in the background.

Oakville Rainbow



## Oakville Rainbow

Oakville Rainbow sandstone is surely a sight to see on any project. This jaw dropping stone will leave your guests in awe and will have them talking about your landscape project for years to come. Oakville Rainbow's smooth texture is sleek and easy to walk on. Being slightly more porous than our other sandstones, occasional cleaning or maintenance may be required depending on its horticultural surroundings. It is recommended to mortar lay this product although dry lay applications have been successfully accomplished.



Oakville Rainbow



A close-up photograph of a stone tile floor. The tiles are rectangular and arranged in a staggered pattern. They feature various natural stone patterns, including veined marbles, solid colors, and some with abstract designs. The color palette ranges from light beige and cream to dark browns and greys. In the upper left corner, a black metal chair with a brown seat is partially visible. In the upper right corner, a portion of a striped cushion is seen. The overall aesthetic is rustic and natural.

 Oakville Rustic Plains

# DESERT DIAMOND CASINO WEST VALLEY

## Oakville Rustic Plains

Oakville Rustic Plains conjures images of the American Frontier. Warm tans, browns, black, and buffs evoke images of a time gone by. This product lends itself well to any southern estate or western ranch style home. This is why Oakville Rustic Plains has become the most popular stone from Big Sky country to south of the Mason-Dixon line.



 Oakville Slate Grey





## Oakville Slate Grey

Oakville Slate Grey is both enduring and powerful like a Medieval Castle or a stone fortress. Its tones of deep grey with slight hues of brown compliment any material in its surroundings. Due to its neutral color and consistent natural texture, Oakville Slate Grey has become one of our most popular products.



Oakville Teakwood







## Oakville Teakwood

Oakville Teakwood is sedimentary sandstone that resembles real wood. With its fresh cut lumber look, one cannot help to ask if this stone is in fact real wood. With its smooth texture and clean lines Oakville Teakwood will enhance any modern design and is a sure attention grabber. This product is cut to near perfect tolerance. However, being slightly more porous than our other sandstones, occasional cleaning or maintenance may be required. Oakville Teakwood is recommended to be mortar laid, although dry lay applications have been successfully accomplished.

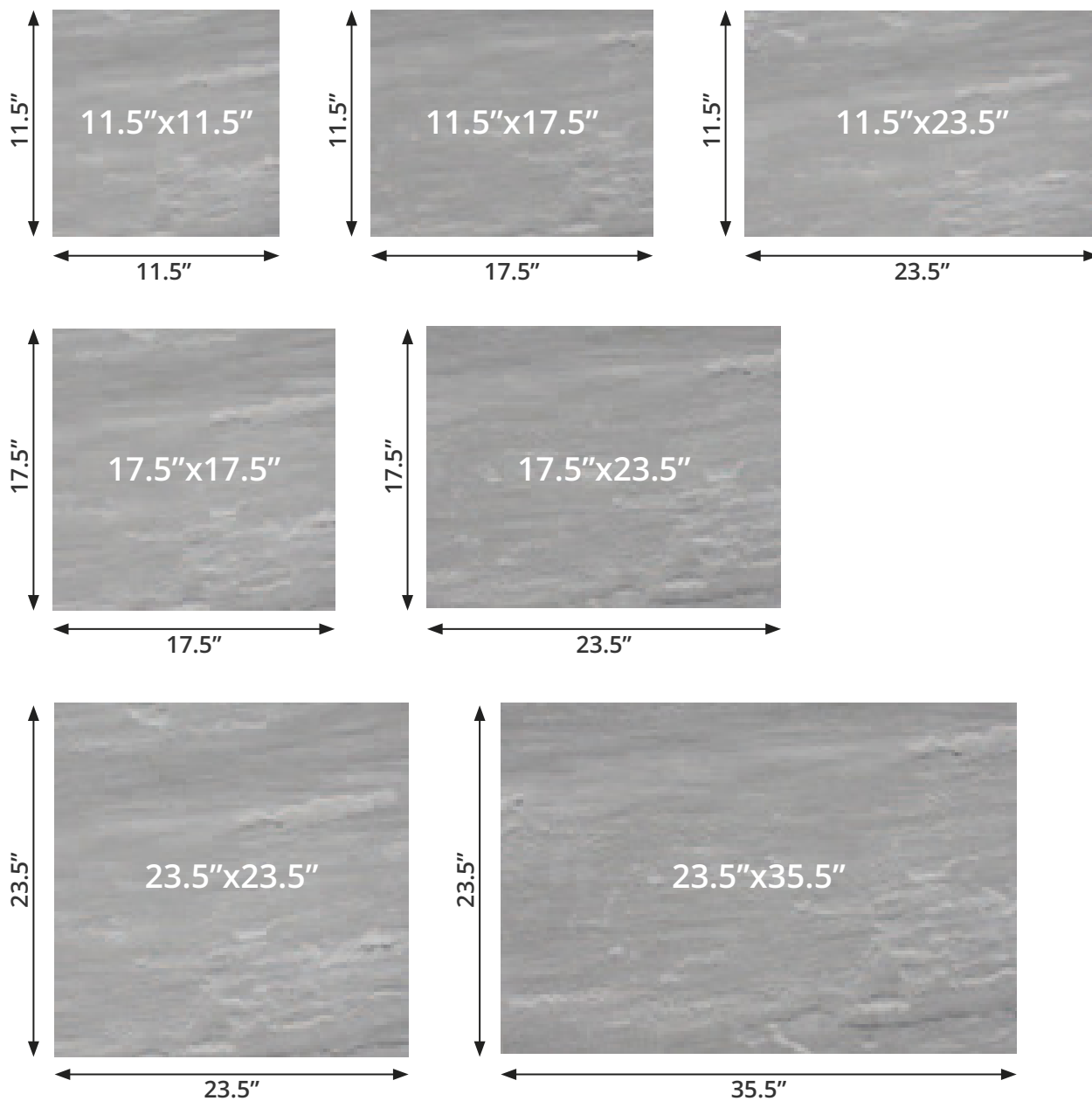


# Paving

Also referred to as square cut or dimensional flagstone, natural stone paving is used anywhere a hardscape application is required. Oakville natural stone paving is perfect for a cozy patio, a gorgeous pool deck, an inviting pathway, or a simple landing.

Oakville natural stone paving comes in a wide variety of colors, textures, and sizes. All paving is calibrated to maintain a consistent thickness thereby saving valuable installation time. Oakville natural stone paving can be “dry” laid or “wet” laid, both resulting in a beautiful project.

## Sizes & Availability:



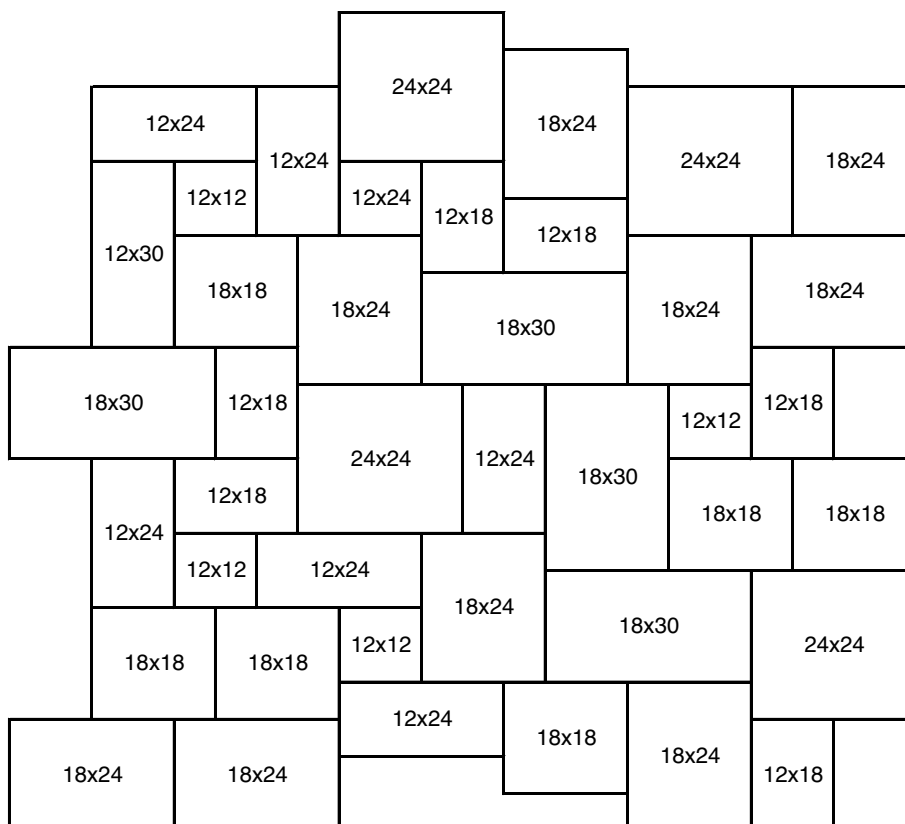
\* Other sizes & thicknesses available upon request

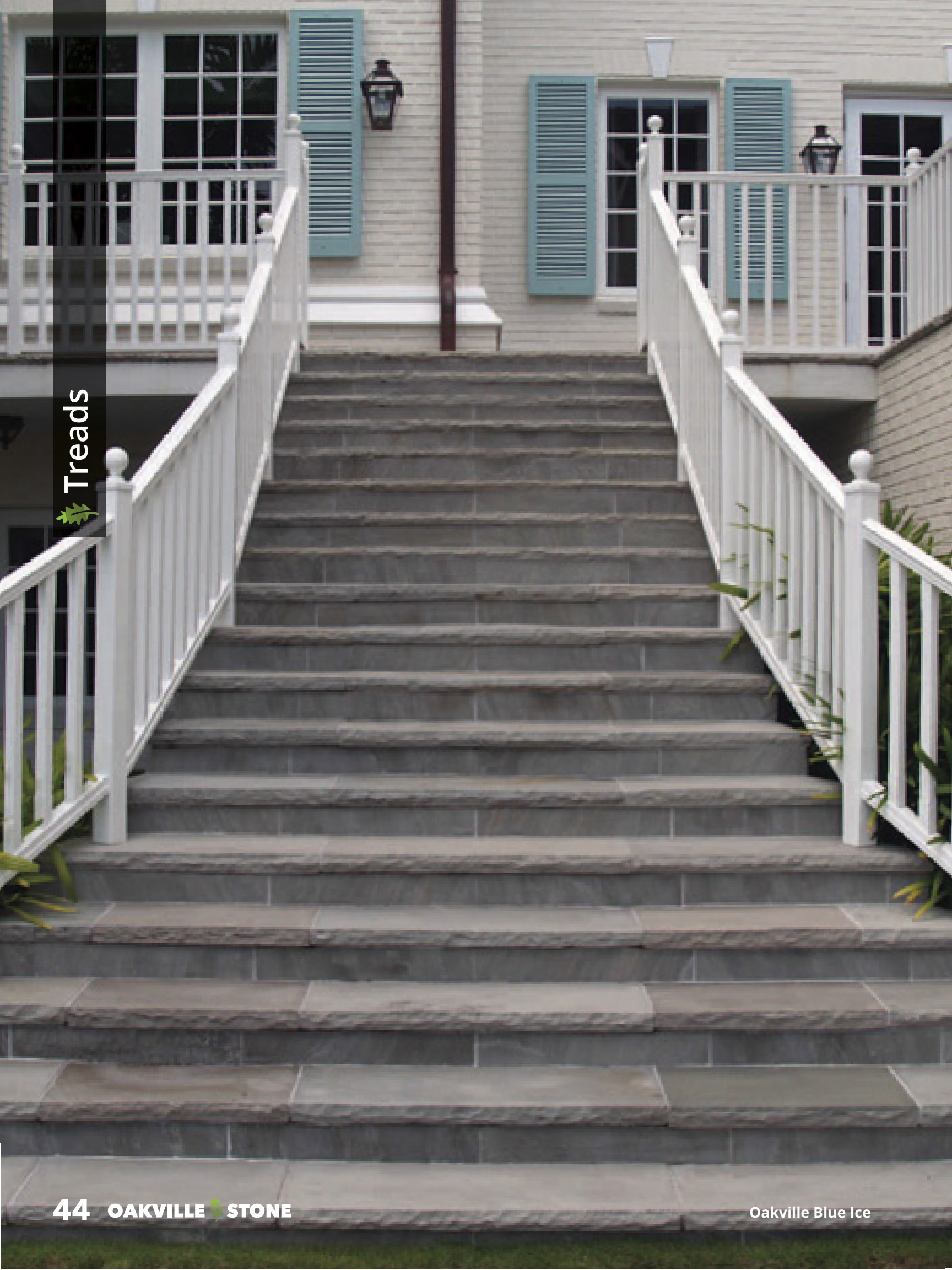
## Finishes & Thickness

Oakville Algonquin Brown	Acid Washed Top – Sawn Bottom – Sawn Edges	1.25" Thick
Oakville Antique Limestone	Acid Washed Top – Sawn Bottom – Sawn Edges	1" Thick
Oakville Autumn Brown	Natural Cleft Top – Calibrated Bottom – Sawn Edges	1" Thick
Oakville Black Limestone	Natural Cleft Top – Calibrated Bottom – Sawn Edges	1" Thick
Oakville Blue Ice	Natural Cleft Top – Calibrated Bottom – Sawn Edges	1" Thick
Oakville Brown Wave	Flamed (Thermal) Top – Sawn Bottom – Sawn Edges	1.25" Thick
Oakville Buff	Natural Cleft Top – Calibrated Bottom – Sawn Edges	1" Thick
Oakville Hampton Limestone	Flamed & Brushed Top – Sawn Bottom – Sawn Edges	1" Thick
Oakville Imperial Black	Natural Cleft Top – Calibrated Bottom – Sawn Edges	1" Thick
Oakville Jet Black	Flamed (Thermal) Top – Sawn Bottom – Sawn Edges	1" Thick
Oakville Kodiak	Sandblasted Top – Sawn Bottom – Sawn Edges	1.25" Thick
Oakville Lavender	Natural Cleft Top – Calibrated Bottom – Sawn Edges	1" Thick
Oakville Rainbow	Sawn Top – Sawn Bottom – Sawn Edges	1" Thick
Oakville Rustic Plains	Natural Cleft Top & Bottom – Sawn Edges	1" Thick
Oakville Slate Grey	Natural Cleft Top – Calibrated Bottom – Sawn Edges	1" Thick
Oakville Teakwood	Sawn Top – Sawn Bottom – Sawn Edges	1" Thick

## Oakville Stone Pattern # 2

is a pre-mixed pattern in a crate. No complicated estimating or blending required. Simply follow the diagram below for a natural random look.





Treads



## Treads

Oakville Rainbow

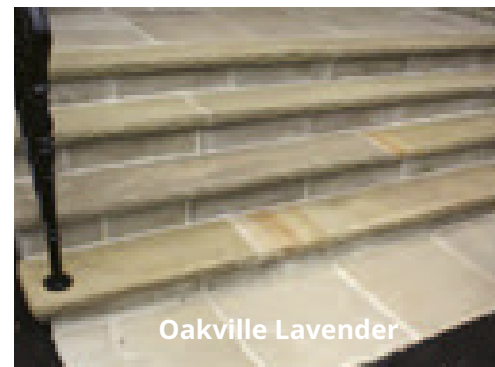
Treads are typically used for the top surface of a step. They are also used as a coping stone, wall caps, or edging for patios and pool decks. Alternately, they may also be used as hearths and mantels for both interior and exterior fireplaces. Oakville Stone treads come in a large selection of colors, textures, and sizes. All treads are calibrated to maintain consistent thickness and rockfaced on 1 long edge to add timeless elegance to any project.



Oakville Black Limestone



Oakville Slate Grey



Oakville Lavender



- Thickness: 2"
- Widths: 12", 14", 18", 24"
- Lengths: 48", 60, 72", 96"
- Finish: Rockfaced on 1 long edge - Sawn on 3 remaining edges

\*Other sizes & thicknesses available upon request



Pool Coping



## Pool Coping

Oakville Teakwood

Pool coping is traditionally used as edging around the inside of a pool or spa. It can also be used as the top surface of a step or patio edging to create a sleek modern look. Oakville Stone pool coping comes in a large selection of colors, textures, and sizes. All pool coping is calibrated to maintain consistent thickness and bullnosed & finished on 1 long edge.



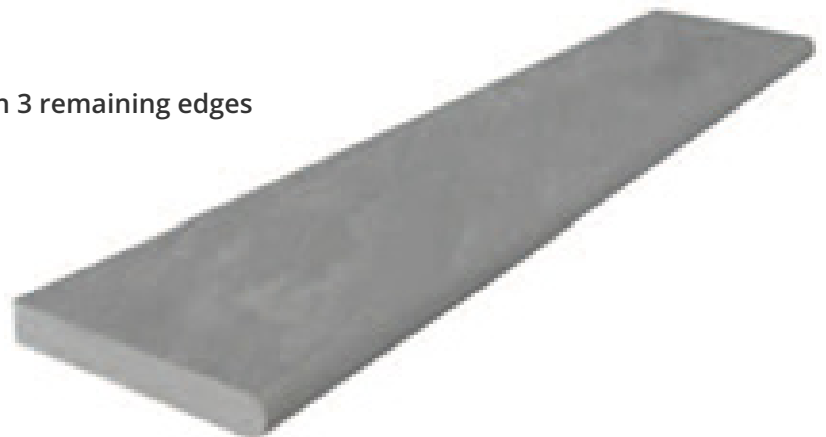
Oakville Rainbow




Oakville Blue Ice

- Thickness: 2"
- Width: 12"x48" & 14"x72"
- Finish: Bullnosed & finished on 1 long edge - sawn on 3 remaining edges

\*other sizes & thicknesses available upon request





Steps

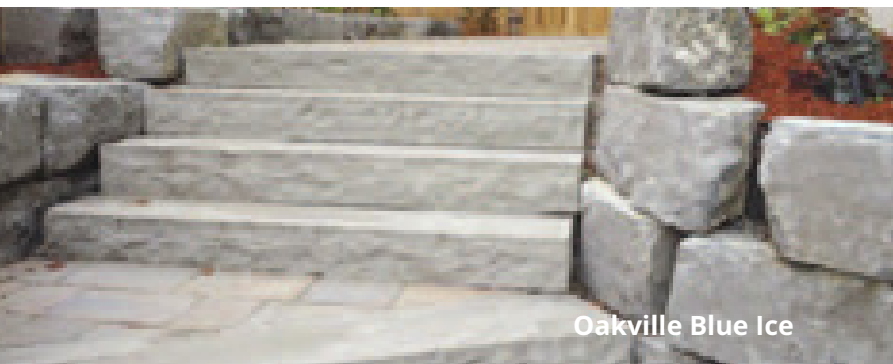




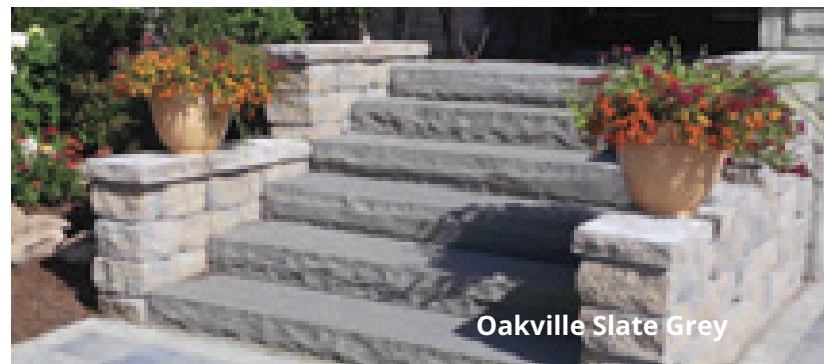
## Steps

Oakville Jet Black

Steps are used to transition from one elevation to another. Oakville Stone steps are solid stone that act as both tread and riser. Simple in design and application, they create a bold statement on any front entrance or backyard patio.



Oakville Blue Ice



Oakville Slate Grey



Thickness: 7" (Oakville Black Limestone 6")  
Width: 16"  
Lengths: 48", 60", 72", 96"

\*other sizes & thicknesses available upon request

Fillers & Curbs





## Fillers & Curbs

Oakville Lavender

Fillers & Curbs are the same product that can be used in two different applications. Fillers are used to support steps as they rise from ground level to final elevation. Since they always have 1 long side rockfaced, when used in this manner, they give the impression that a full size step was used. Curbs can be used as garden or driveway edging or anywhere else retention is required. Always having a finished top and at least 1 long side rockfaced, they are a completely finished product requiring only the lengths to be trimmed when you come to the end of the line.




Oakville Slate Grey



Oakville Blue Ice



Thickness: 7" (Oakville Black Limestone 6")  
 Width: 6"  
 Length: 31"  
 Finish: Finished Top - Rockfaced on 1 long edge  
 - sawn or split on 3 remaining edges



Pier Caps



## Pier Caps

Oakville Brown Wave

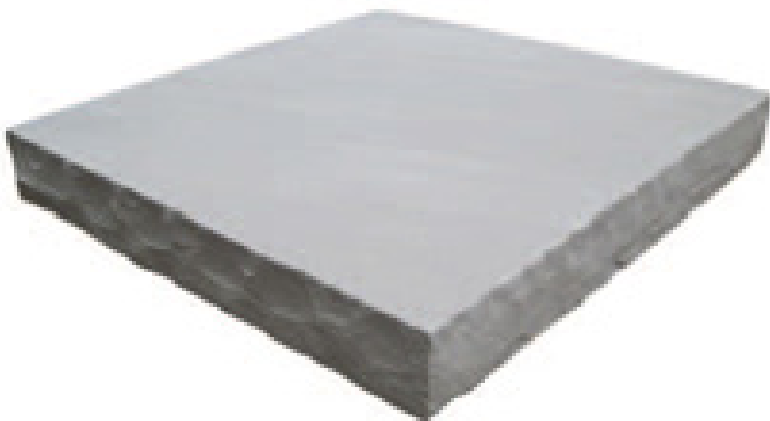
Oakville Stone pier caps provide the finishing touch when used to cap columns or pillars made from natural building stone, brick, or concrete. Oakville Stone pier caps are the icing on the cake that accentuate and enhance your architectural design. Our pier caps come in a large selection of colors, textures, and sizes. All pier caps are calibrated to maintain consistent thickness and are rockfaced on 4 edges.



Oakville Autumn Brown




Oakville Hampton Limestone



Thickness: 3"

Sizes: 24"x24" & 28"x28"

\*other sizes & thicknesses available upon request



Slabs



# Slabs

Oakville Hampton Limestone

Slabs are large sheets of stone used as a blank canvas to be cut into any desired shape or size a landscape design may require. Applications include outdoor kitchen/barbecue countertops, custom radius treads or pool coping, tabletops, hearths, large format paving, and any other item that one can imagine.



Oakville Blue Ice

- Thickness: 2"
- Width: 36" - 48"
- Length: 72" - 96"

\*other sizes & thicknesses available upon request.

## Custom Fabrication

Every landscape project is unique and designed from one's architectural imagination. For those seeking a more tailored fit, our company has the ability to turn any architectural detail into reality. Over the past 12 years we have been custom fabricating natural stone for some of North America's most prestigious hotels, ski resorts, golf courses, and multi-million dollar homes.

**What do we need to fulfill your custom architectural requirement?**

- Shop drawings or legible hand-drawn sketches with all necessary measurements, radius, finishes.
- At least 3 - 4 months before your custom cut finished product is required on the jobsite.





Oakville Sunset



Oakville Rainbow



Oakville Rainbow



Oakville Chocolate



## Installation Methods

Being a calibrated product, Oakville Stone paving is ideal for either one of the two most common installation techniques as described below. With a quality installation, and minimal regular maintenance, Oakville Stone products will last a lifetime and will enhance the enjoyment of your outdoor space.

### “Dry-Lay” Installation

Dry-lay installation refers to the laying of stone paving on a bed of gravel and sand. It is typically the most economical installation technique, but if not done correctly, natural paving stones can move over time. To avoid any movement we recommend that a patio or walkway base be a minimum of 8” deep (preferably 12” if possible). A structure is only as good as its base, therefore an extra 2” - 4” of excavation will prove an excellent investment. With a properly compacted base of 8”-12” deep, our 1” and 1 ¼” natural stone pavers are well suited for a dry-lay application and will pose little to no risk of movement over the life of the installation.

### A typical dry-lay installation:

Excavate 8” - 12”

Cover area with geo-textile cloth “landscape fabric” \*optional\*

Backfill entire area with 5 ½” - 9 ½” of crushed gravel (¾”-1”) ensuring to compact every 2”

Add 1” - 1 ½” of coarse bedding sand or ¼” stone chips (clear)

Screed to level entire area

Lay Oakville Stone paving in your preferred pattern.

Large size paving stone should be strategically placed at doorway entrances or at the bottom of steps to ensure stability in heavy-traffic areas. The same applies to pool decks where pool cover mechanisms may be anchored into the stone.

Once Oakville Stone paving is placed, joints can be filled with fine sand, polymeric sand, or mortar.

## **“Wet-Lay” or Mortar Installation**

Wet-lay or mortar installation is the direct opposite of dry-lay installation: natural stone paving is applied with wet mortar directly on a sub-base of compacted gravel and sand, or to a new/existing concrete slab. Once laid, joints are typically filled with additional mortar or colored grout. This is the technique of choice when considering permanence and decreased maintenance.

### **A typical wet-lay installation:**

Excavate to a depth of 12” below finished grade, making sure the sub-grade slopes away from the home or structure. If the area is intended for vehicular traffic, this depth should be increased to 16”-18” depending on soil conditions. Ensure any pockets of organic material are removed, and sub-grade is solid and stable.

Granular Base – Add 6” of granular base ( $\frac{3}{4}$ ” crushed gravel, granular “A”, or  $\frac{3}{4}$ ” clear stone) and compact every 2” with a mechanical tamper. Use water to help increase compaction. In a vehicular condition, the depth of granular material should be increased to at least 10”.

Reinforced Concrete Pad – Pour enough concrete to establish a concrete pad of 4”-5” in depth (6” for vehicular conditions). Prior to the pour, lay reinforcing mesh throughout. As concrete is poured, mesh must be kept up off of the granular surface so it is contained within the lower half of the concrete. Concrete should be finished off to ensure proper slope is achieved. Within 1-2 days, concrete may be cut every 8’-10’ to help prevent cracking.

Oakville Stone Paving Installation – Masonry cement (typically type S) is mixed with sand and water as per manufacturer’s instructions. With a trowel, add approximately 1” of mortar onto the concrete pad. To increase adhesion we recommend the use of a bonding agent applied directly to the back of the Oakville Stone paver and mixed into the mortar itself. You can also back butter the pavers with the mix of mortar and bonding agent. If not using a bonding agent be sure to back-butter each paver and lay in your preferred pattern making sure each paver fully adheres to the mortar.

Mortar Joint - Oakville Stone paving is designed to be installed with a 1/2” or 3/8” joint. When stone has set, joints should be filled with mortar or colored grout. We recommend the use of a grout bag as it lends to a much easier clean up. Joints should then be cleaned as soon as possible with a damp sponge (rinsing often) before the mortar has time to dry on the surface of the stone paving. \*Very important: if mortar has fully dried on the surface of the stone paving, DO NOT use muriatic or any other type of acid to remove it. Instead check with your local masonry supply store for alternative cleaners. Once mortar joints have set, clean entire area with a power washer; do not use a concentrated stream as it could cause damage, the stream should fan as it cleans the stone.



# Considerations When Using Natural Stone

## *Color Variation*

Stone is a product of nature. Just as no snowflake is alike, no natural stone is alike (even if it is from the same quarry). It is because of this uniqueness that it is often chosen, but also sometimes mis-understood. Often times the natural color range and variation is the source of this mis-understanding. To avoid this, one should first accept that natural stone has natural variation in color and texture. Sawn and finished stone (honed, flamed, sandblasted, etc.) will have minimal variation in texture. Secondly one should make a decision on the stone of their choice after seeing several full size pieces laid out.

## *Maintenance*

Natural stone will last a lifetime with very little maintenance. However if you are the type that wants to keep your natural stone installation looking as close to as it did when it was first installed, some regular maintenance will be required. At minimum, regularly sweep to ensure loose dirt or fallen leaves do not sit on the stone for prolonged periods of time. Do not drive or allow heavy equipment to be driven on areas where the base would not support such weight. Do not allow oils or acids (acidic liquids) to come in contact with the stone. If using a gas or charcoal grill, ensure you cover the area with a grill mat to protect your natural stone patio or deck.

## *Cleaning*

At no time should any cleaner containing muriatic or hydrochloric acid be used on any type of natural stone (including Oakville Stone). Using these harsh acids is not only bad for the stone, dangerous to oneself, but also very toxic to the environment including plants and animals. If organic stains from soils, moss, mould, or leaves occur, it is best to first try cleaning with a mild soap solution, a stiff deck brush, and water. If required, a high pressure power washer is also acceptable (ensure that the nozzle is not set to the most concentrated stream to avoid the risk of damaging the stone). If the stains persist, there are many natural stone cleaning products on the market that have been proven to work well.

## *Sealing*

The sealing of natural stone is a hotly debated subject in our industry. Traditionalists say natural stone should never be sealed and one should enjoy it as it weathers and ages over time. Proponents of sealing report that it helps reduce maintenance and potential stain and/or discoloration. Our company takes a balanced approach. In our opinion sealing or not sealing is entirely a personal choice. Choosing either one will not adversely affect the life of Oakville Stone products. One should just be aware of the possible outcomes of each choice. When choosing not to seal your natural stone, one should expect to either accept some slight fading over time and potential organic staining if not regularly maintained (swept or sprayed with water). If one chooses to seal, it is important to first confirm whether the sealer being used is right for that particular stone and installation type, and to read and follow the manufacturer's instructions carefully to ensure it is applied correctly. Before proceeding with any type of natural stone sealer or cleaner, be sure to first test it in an inconspicuous area.

## *Stone Testing*

ASTM is the abbreviation for the American Society for Testing and Materials. ASTM is an international standards organization that develops and publishes technical standards for a wide range of materials and products. Before proceeding with any new stone it is our practice to first have it tested under the ASTM laboratory testing standards. The four most common categories under ASTM testing in the stone industry are: compressive strength, flexural strength, absorption, and density. Upon request we can provide the results from these tests for each and every one of our stone products.



# Win!

## Win a *trip for two* to the Caribbean!

Are you proud of your Oakville Stone landscape project? We would love to see it! Whether it is a large or small project, email us some photos of your landscape and you could win an all-inclusive trip for two to the Caribbean.

### Details

Our panel of judges will select the best photo/project and one grand prize winner will be announced at the end of each calendar year.

Unlimited entries are accepted.

All entries will receive a complimentary prize just for sharing.

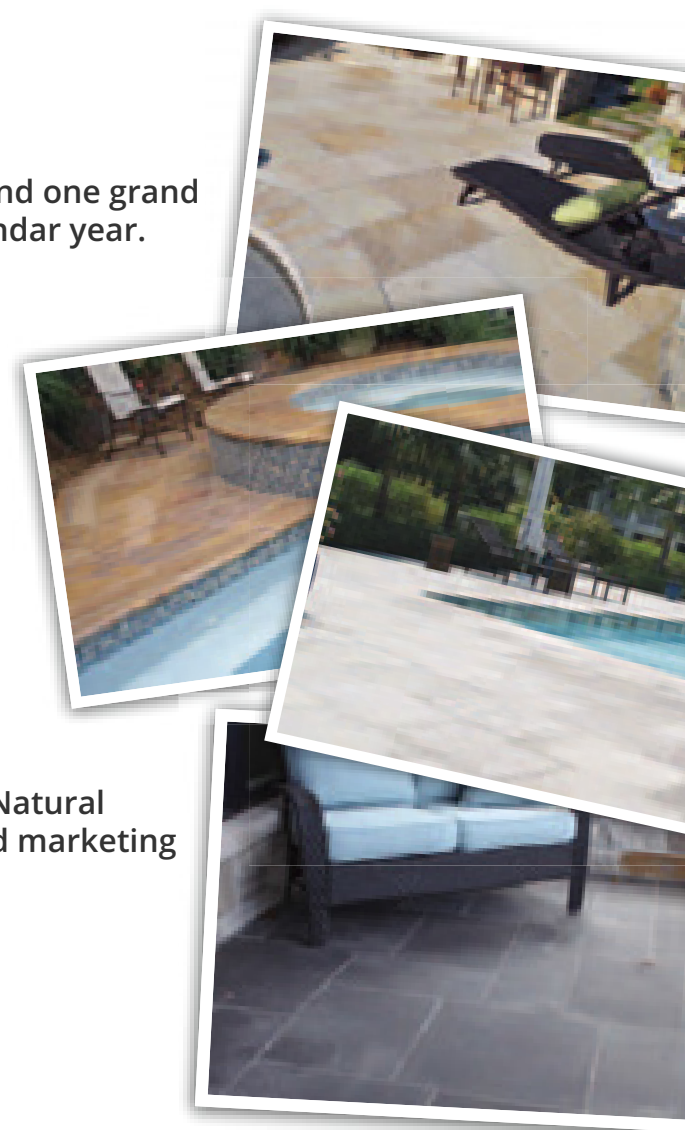
Contest is open to homeowners, contractors, masons, architects, designers, and distributors.

### Contest Terms & Conditions

With each entry, a valid proof of purchase from an authorized dealer is required.

All photos submitted will become property of Oakville Natural Stone Corporation and may be used in promotional and marketing material.

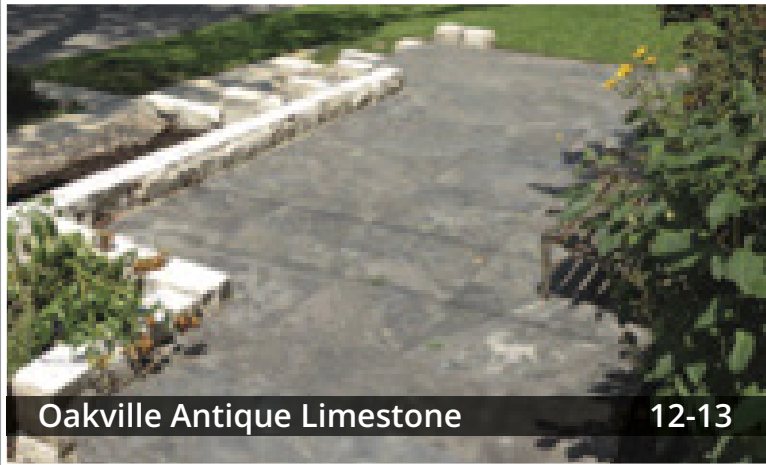
For more details, or to enter your project,  
email: [contest@oakvillestone.com](mailto:contest@oakvillestone.com)





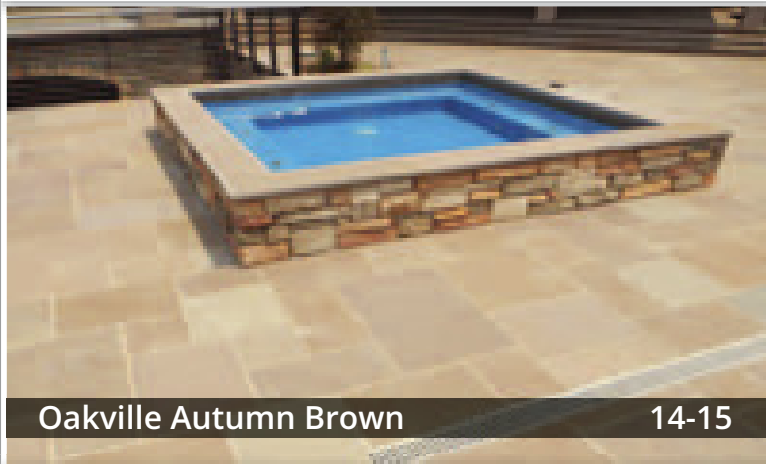
Oakville Algonquin Brown

10-11



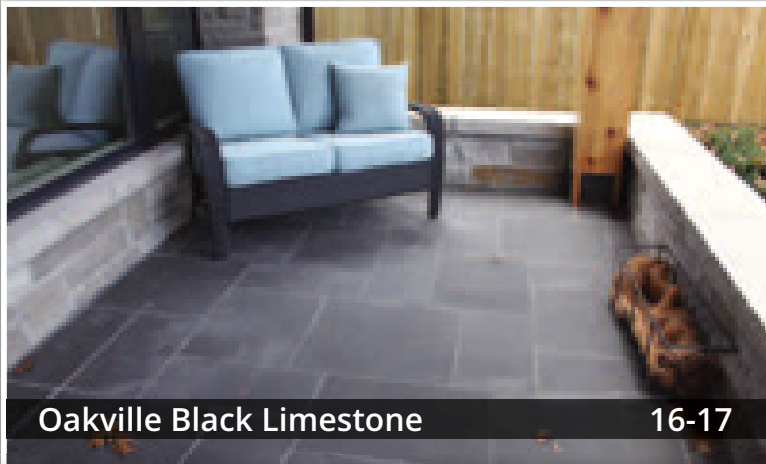
Oakville Antique Limestone

12-13



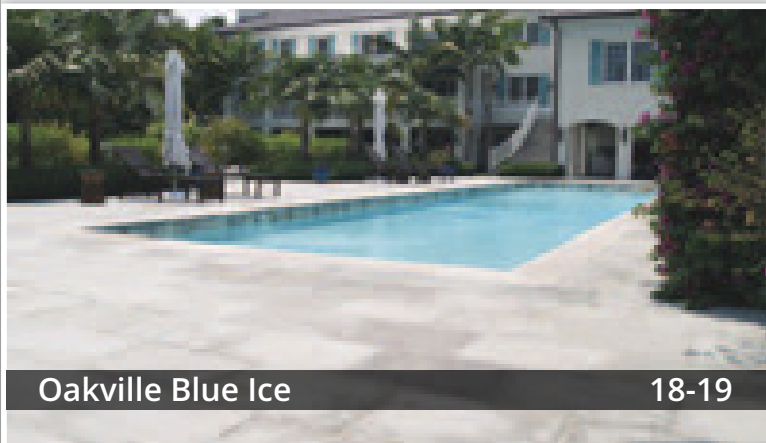
Oakville Autumn Brown

14-15



Oakville Black Limestone

16-17



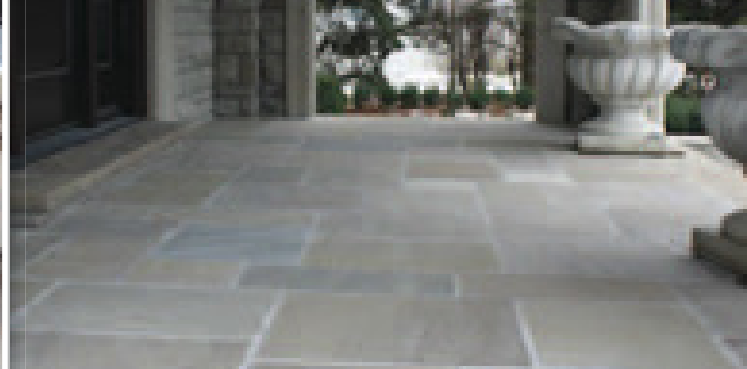
Oakville Blue Ice

18-19



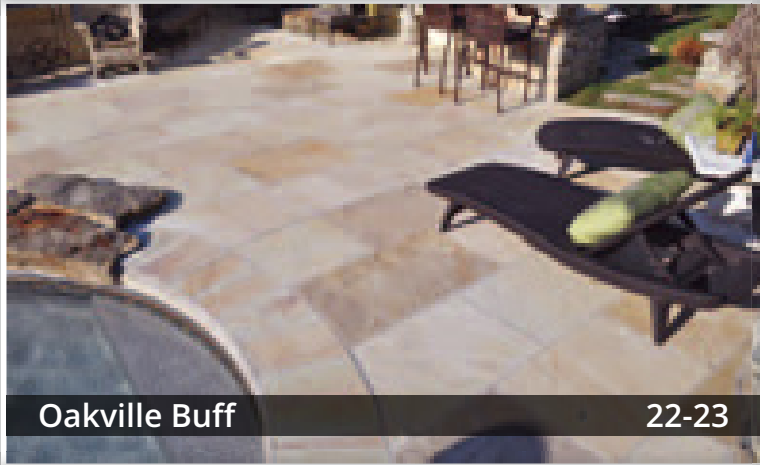
Oakville Brown Wave

20-21



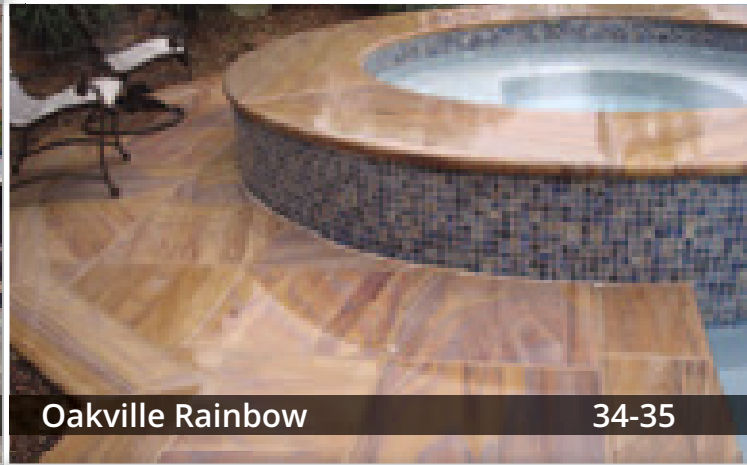
Oakville Lavender

32-33



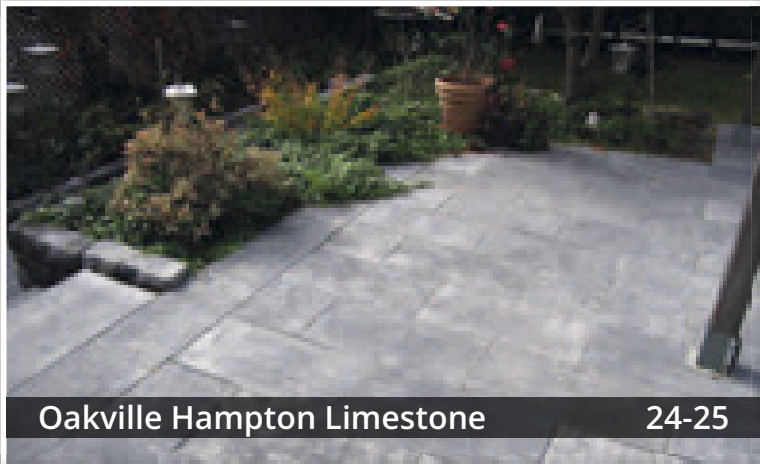
Oakville Buff

22-23



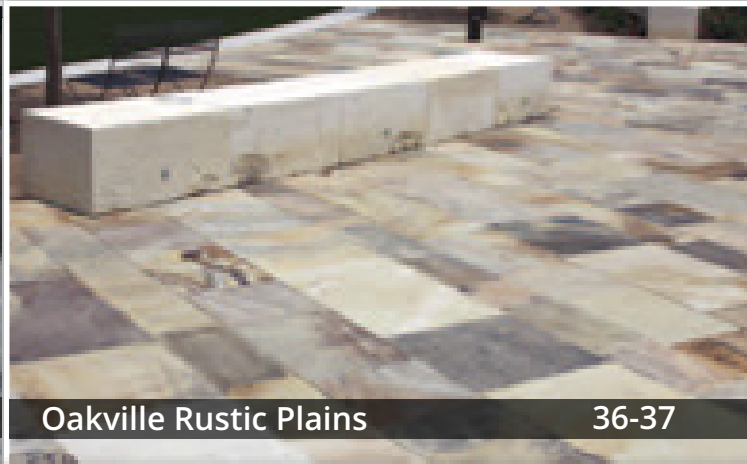
Oakville Rainbow

34-35



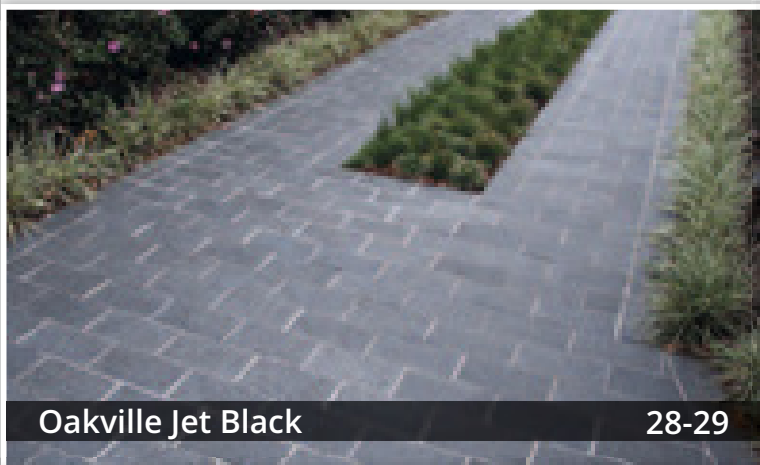
Oakville Hampton Limestone

24-25



Oakville Rustic Plains

36-37



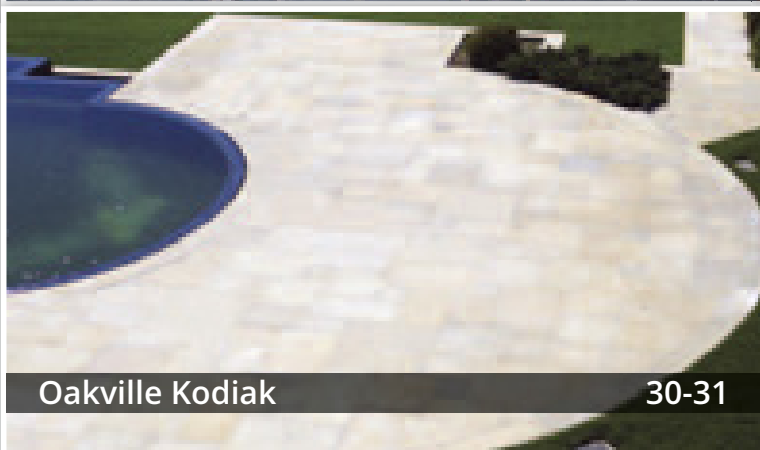
Oakville Jet Black

28-29



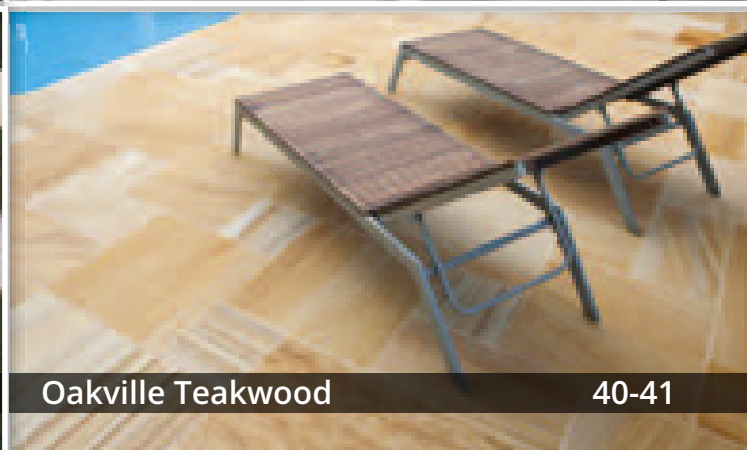
Oakville Slate Grey

38-39



Oakville Kodiak

30-31



Oakville Teakwood

40-41



Oakville Kodiak

# OAKVILLE STONE

[www.oakvillestone.com](http://www.oakvillestone.com)

960 Kamato Road,  
Mississauga, Ontario, L4W 2R6, Canada  
T: 905-270-1110 F: 905-270-1160

Authorized Dealer